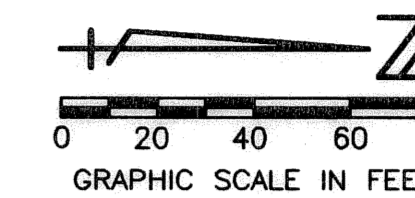


MIRASOL PARCEL TWENTY-FIVE

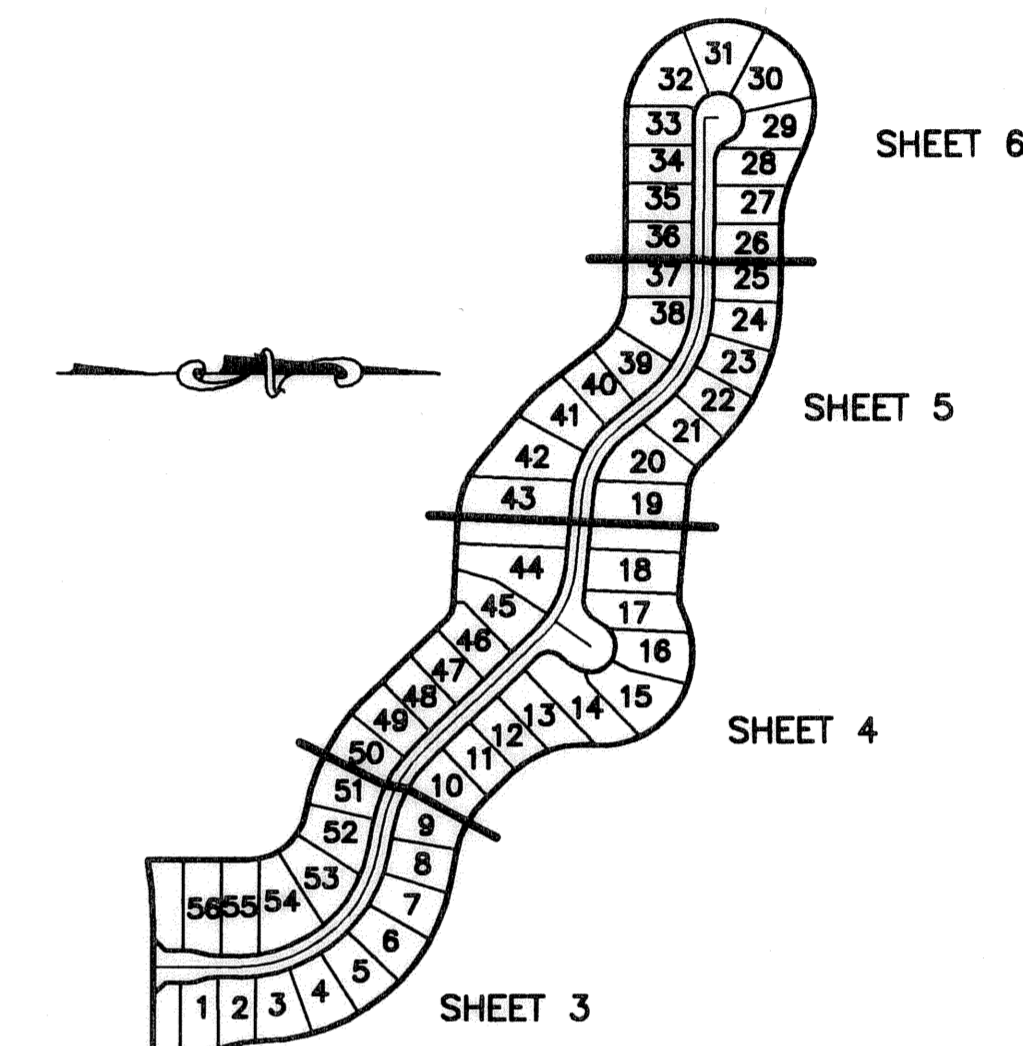
PART OF MIRASOL P.C.D.
BEING IN SECTIONS 03 AND 04, TOWNSHIP 42 SOUTH, RANGE 42 EAST,
CITY OF PALM BEACH GARDENS,
PALM BEACH COUNTY, FLORIDA
SHEET 3 OF 6

167

STATE OF FLORIDA
COUNTY OF PALM BEACH
THIS INSTRUMENT WAS FILED FOR
RECORD _____ DAY OF _____
AD, 2004 AND DULY RECORDED
IN PLAT BOOK _____ ON PAGES
_____ AND _____
DOROTHY H. WILKEN, CLERK
BY: _____, D.C.



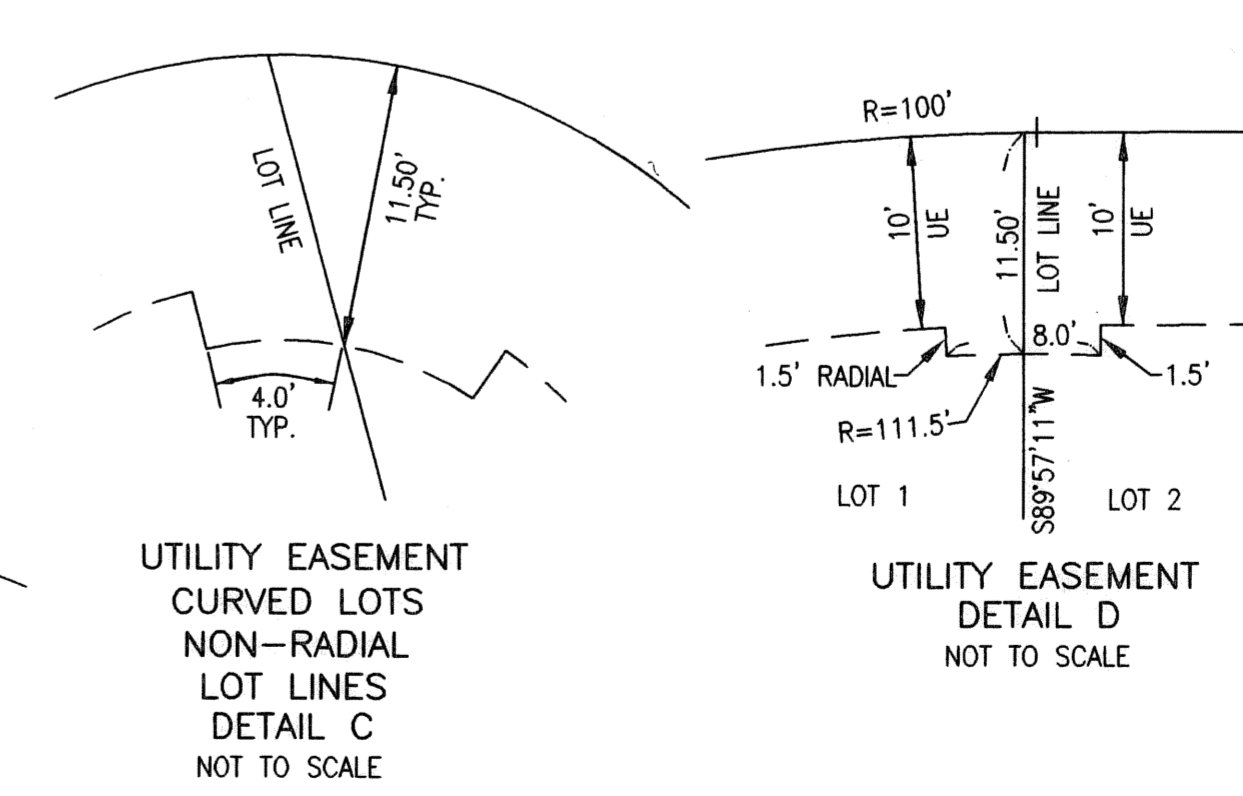
CIRCUIT COURT SEAL



SHEET LOCATION MAP
NOT TO SCALE

LEGEND

- Δ CENTRAL (DELTA) ANGLE
- CH CHORD BEARING AND DISTANCE
- DE DRAINAGE EASEMENT
- IEE INGRESS-EGRESS EASEMENT
- LME LAKE MAINTENANCE EASEMENT
- L ARC LENGTH
- NPBCID NORTHERN PALM BEACH COUNTY IMPROVEMENT DISTRICT
- ORB OFFICIAL RECORD BOOK
- PAE PEDESTRIAN ACCESS EASEMENT
- PB PLAT BOOK
- PCD PLANNED COMMUNITY DEVELOPMENT
- PG(S) PAGE(S)
- R RADIUS
- SLE SEWER LINE EASEMENT
- UE UTILITY EASEMENT
- WLE WATER LINE EASEMENT
- WMME WATER MANAGEMENT MAINTENANCE EASEMENT
- NAIL AND DISK PRM SET LB 048
- PERMANENT REFERENCE MONUMENT SET LB 048 (4" x 4" CONCRETE)
- PERMANENT CONTROL POINT SET LB 048
- ⊕ CENTERLINE
- ⊕ SECTION CORNER



THIS INSTRUMENT WAS PREPARED BY MANUEL A. GUTIERREZ, P.S.M. IN THE OFFICES OF MOCK, ROOS & ASSOCIATES, INC., 5720 CORPORATE WAY, WEST PALM BEACH, FLORIDA 33407.

SCALE:
1"=40'
P.A. NO.:
99372.00
DATE:
APRIL, 2004
DRAWING NO.:
42-42-03-125

MOCK • ROOS
ENGINEERS • SURVEYORS • PLANNERS
5720 Corporate Way, West Palm Beach, Florida 33407
(561) 683-3113, fax 478-7248

MIRASOL PARCEL TWENTY-FIVE
PART OF MIRASOL P.C.D.
BEING IN SECTIONS 03 AND 04,
TOWNSHIP 42 SOUTH, RANGE 42 EAST,
CITY OF PALM BEACH GARDENS,
PALM BEACH COUNTY, FLORIDA

SHEET 3 OF 6

PLOT NAME: Dec 02, 2004 - 3:49pm
 DATE: Dec 02, 2004 - 3:49pm
 S:\proj\1040025\dwg\p25r02.dwg
 REV 12-02-04
 CADD FILE:
 S:\proj\1040025\dwg\p25r02.dwg